



FULLERTON COLLEGE CAMPUS THEATRE

EXPERIENCED TECHNICIANS + CUTTING EDGE ENTERTAINMENT TECHNOLOGY



Venue Information Packet

Technical Specifications, Plots, Ground plans and Amenities



Office of Theatre Operations
714-732-5712
theatreops@fullcoll.edu

Lighting...

control desk

ETC's Apex 20 24K Lighting Control Desk, 20 Motorized Playback sits as our primary control source for both our automated and fixed LED lighting fixtures. The console sits in an elevated booth position approximately fifteen feet above audience level. For rehearsals, the console can be repositioned in the audience to accommodate a more suitable setting for designers.

front of house

Two recessed positions spanning the entire width of the house provide ample front light coverage to all areas of the stage both upstage and downstage of the main curtain. Each beam has a mix of both conventional and LED ETC source fours. Located in the center elevated booth position, sits two Strong Strong Super Trouper III spotlights.

repertory specs

0.5 BEAM - FOH:

- 6 - Chauvet Maverick Mk.3 Wash [Down Light]
- 4 - Martin Mac Viper Performance

1ST BEAM - FOH:

- 5 - ETC S4 Lustr 2 w/ 19° barrels [Front Light]
- 5 - ETC S4 Lustr 2 w/ 26° barrels [Front Lights]
- 1 - ETC S4 575w w/ 14° barrels + DMX Iris & Rosco I Cue Mirror [Front Specials]
- 2 - ETC S4 Lustr Daylight w/ 26° barrels [On Stage Stair Lights]

2ND BEAM - FOH:

- 10 - ETC S4 Lustr Daylight w/ 19° barrels [Front Light]
- 5 - ETC S4 Lustr Daylight w/ 14° barrels [Front Light]
- 6 - ETC S4 Lustr 2 w/ 26° barrels [Front Wash]
- 4 - ETC S4 575w w/ 19° barrels + DMX Iris & Rosco I Cue Mirror [Front Specials]

1ST ELECTRIC - MAIN STAGE:

- 4 - ETC S4 Lustr+, 26° barrels [Side Light]
- 2 - ETC S4 Lustr+, 36° barrels [Side Light]
- 6 - Chauvet Maverick Mk.3 Wash [Down Light]
- 7 - Martin Rush Par2 RGBW Zoom [Back Light]

1A ELECTRIC - MAIN STAGE:

- 2 - Martin Mac Viper Performance
- 3 - Martin Mac Viper Profile

2ND ELECTRIC - MAIN STAGE:

- 4 - ETC S4 Lustr 2 w/ 36° barrels [Side Light]
- 2 - ETC S4 Lustr 2 w/ 26° barrels [Side Light]
- 6 - Chauvet Maverick Mk.3 Wash [Down Light]
- 7 - Martin Rush Par2 RGBW Zoom [Back Light]

3RD ELECTRIC - MAIN STAGE:

- 4 - ETC S4 Lustr 2 w/ 36° barrels [Side Light]
- 2 - ETC S4 Lustr 2 w/ 26° barrels [Side Light]
- 6 - Chauvet Maverick Mk.3 Wash [Down Light]
- 7 - Martin Rush Par2 RGBW Zoom [Back Light]

4TH ELECTRIC - MAIN STAGE:

- 4 - ETC S4 Lustr 2 w/ 36° barrels [Side Light]
- 2 - ETC S4 Lustr 2 w/ 26° barrels [Side Light]
- 6 - Chauvet Maverick Mk.3 Wash [Down Light]
- 7 - Martin Rush Par2 RGBW Zoom [Back Light]

5TH ELECTRIC - MAIN STAGE:

- 6 - Martin Rush Par2 RGBW Zoom [Back Light]
- 2 - Martin Mac Viper Performance
- 3 - Martin Mac Viper Profile

CYC ELECTRIC - MAIN STAGE:

- 8 - Chroma-Q Color Force II 72 [Cyc Lights]

ADDITIONAL EFFECTS & INVENTORY:

- 1 - LSG Low Lay Fogger (gas purchase required)
- 3 - Martin Jem K1 Hazer
- 1 - Mirror Ball
- 2 - Martin Jem ZR44 Hi-Mass Fog Machine
- 3 - Chauvet Geyser Fog Machine
- 2 - Strong Super Trouper III Spotlights.
- 24 - Chroma-Q Color Force II 12 [Cyc Ground Row]
- 24 - ETC S4 Lustr+ [Trees]
- 10 - Pipe & Base [Ground Support Trees]

electrics

A variety of both fixed LED and intelligent fixtures are positioned across eight electrics allowing the easy accommodation of specials and washes of all types and colors. The truss located directly above orchestra, and downstage of the main, holds multiple Chauvet Maverick Mk3s for wash, along with four Martin Mac Vipers for specials. Upstage of the main, downlight and sidelight needs are fulfilled with a myriad of ETC LED source fours, Chauvet Maverick Mk3s and Martin Rush Par2s. Concluding with our furthest upstage position, multiple Chroma-Q Color Force II 72s are hung for projecting both a wash and LED Effects onto the cyc.

Audio...

reinforcement

The Yamaha CS-R5 - PM-5 Rivage digital mixing console is positioned in the center rear of the auditorium at audience level. The console supports 128 inputs over a distributed Dante audio network. With an additional 16 analogue inputs at the mixing console. Three Nexo PS+15 full-range speakers mounted at the left, right and center of the proscenium and two Nexo MSUB18 subwoofers. Each Nexo speaker boasts a 1300 watt capacity. Eight monitor mixes assignable to locations SL, SR, CS and US in the theatre.

outboard

Digital playback is supported by Qlab with up to 16 Dante channels, via an RUio16. Classic support for CD and 1/8" (headphone jack) for mobile devices is also available.

gear

Microphones:

6 - AKG - C 1000 S	4 - Countryman - E6i W6, Cocoa	22 - Shure - SM58
2 - AKG - C414-XLII	4 - Crown - PCC-160	2 - Shure - MX418/C
3 - Audio Technica - AT4041	2 - Radial - JPC Stereo PC DI	1 - Shure - MX412S
5 - Audio Technica - Pro 42	6 - Sennheiser - MD421-II	8 - Shure - ADX2 HH w/SM58
3 - Audio Technica - U835R	1 - Sennheiser - e602-ii	16 - Shure - AD2 HH w/SM58
2 - Audix - D1	1 - Sennheiser - e901	26 - Shure - Beta 58a
1 - Audix - D2	1 - Sennheiser - e906	11 - Whirlwind - Director DI
1 - Audix - D6	6 - Shure - KSM141	
6 - Bartlett - Stage Floor Mic	4 - Shure - SM27	
2 - Bartlett - Cello Mic	6 - Shure - SM86	
3 - Bartlett - Fiddle Mic	6 - Shure - Beta 98	
1 - Bartlett - Bass Mic	1 - Shure - Beta 52a	
16 - Countryman - E6i W6, Beige	10 - Shure - Beta 58a capsule	
	23 - Shure - SM57	

Monitors:

- 8 - EAW 8" wedges
- 3 - EAW JF80
- 4 - JF80 (permanent installation backstage wings)

Projections...

A high-definition Christie projector Boxer 4k30 is mounted above the rear control booth of the auditorium. The unit is capable of projecting against either the 16'x24' mid-stage screen or for a larger image, the upstage cyclorama. Primary playback is connected through the dedicated iMac with native software support for Qlab, PowerPoint and Keynote. Clients may also "plug into" the system through HDMI and SDI (3g) inputs located backstage and at the rear audience area control booth. Additional video distribution capabilities available throughout the facility.

Stage...

line-sets

FCCT Line-Set Schedule: NUMERICAL ORDER

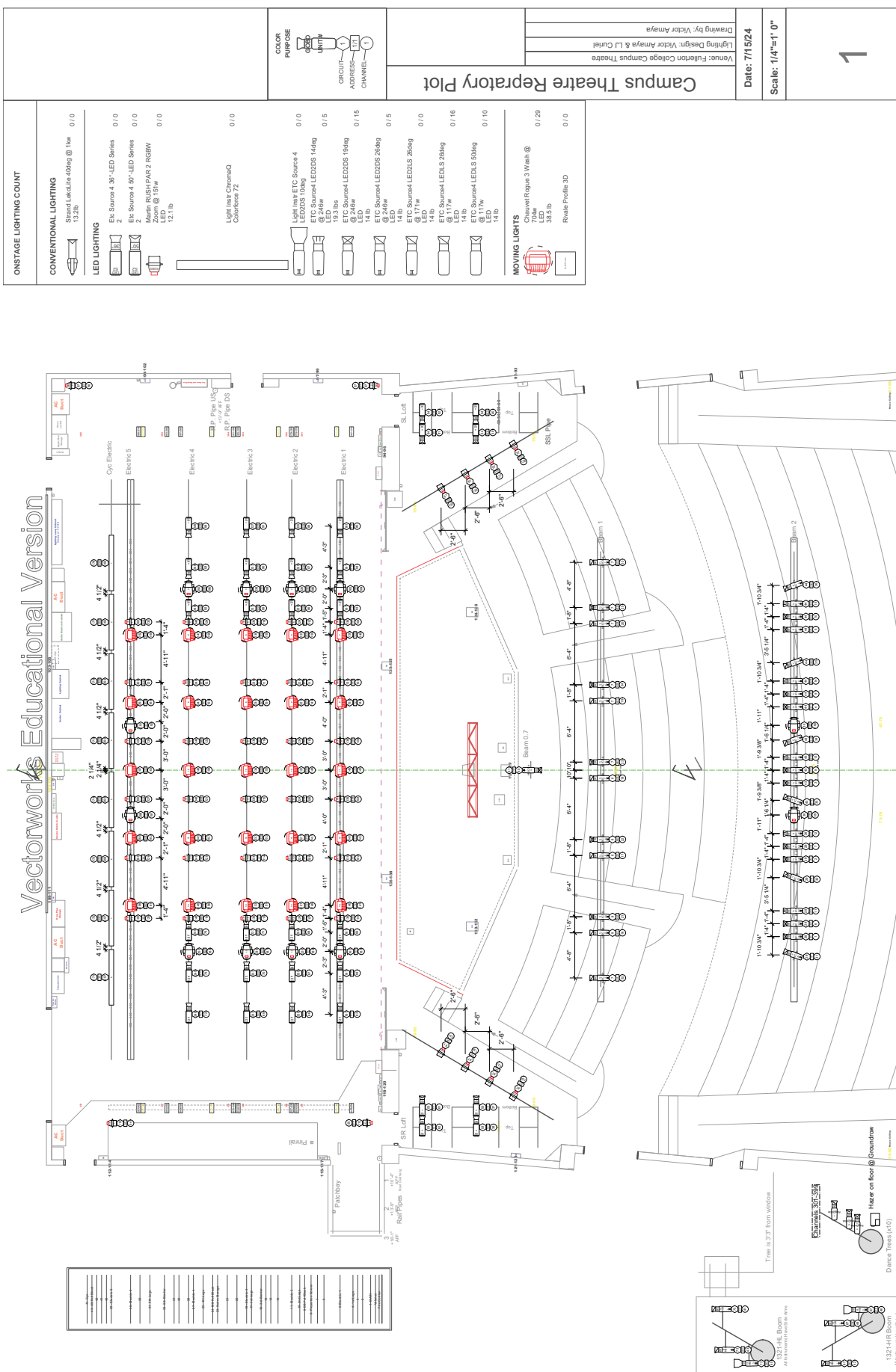
Revised: 3.19.25 Victor Amaya

Grid +55' From Deck

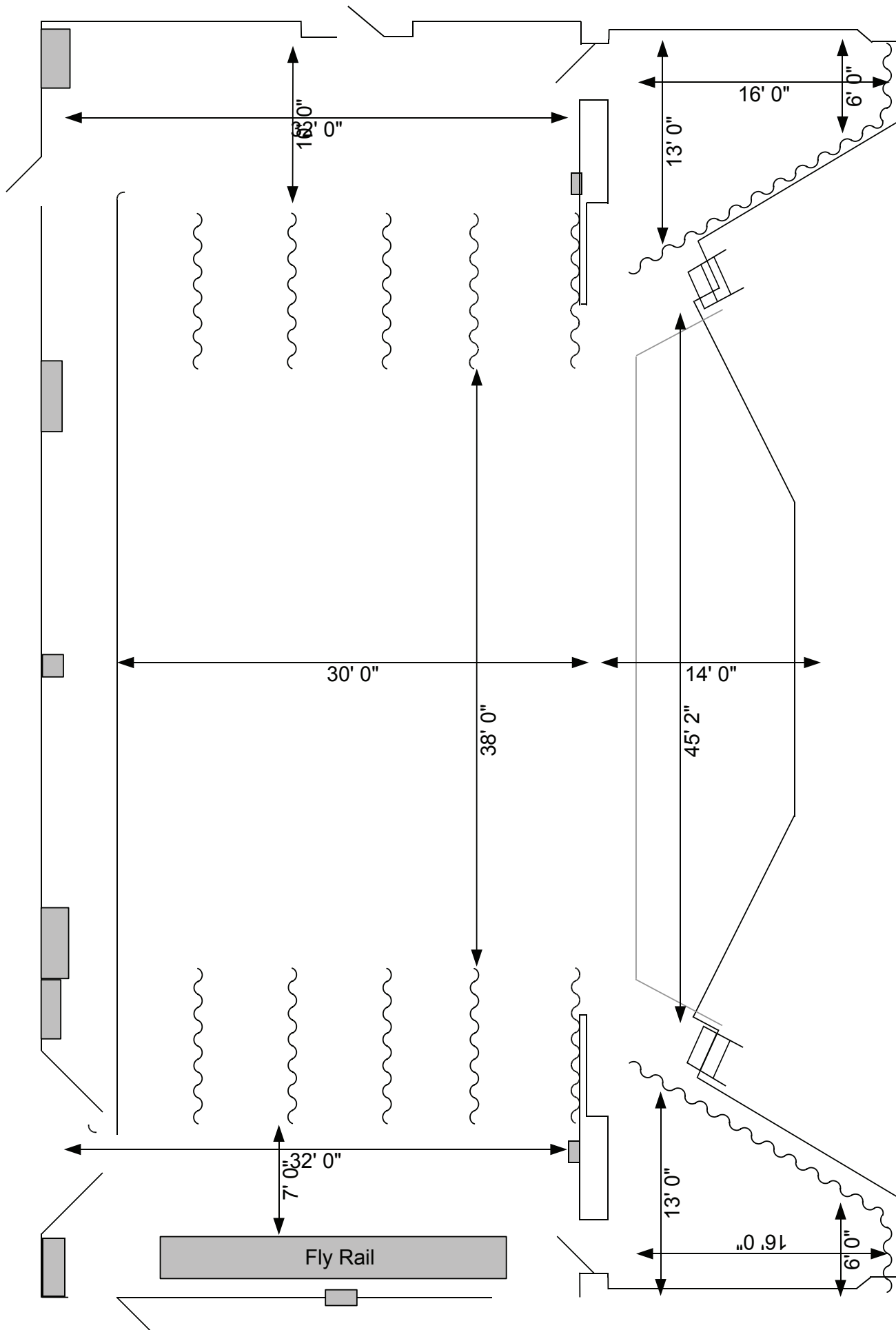
Line-Set	Distance from P.L.	Hang	Trim	System Notes			
				Remarks	Length	Size	Capacity
FC	0'-4"	Fire Curtain		Automated, 6" Crush			
Valance	0'-9"	Valance		Hemp Set	55'-0"		
1	1'-1"	Main			60'-0"	7'-0"	1000 lbs.
2	1'-11"			Double Purchase	55'-0"	14'-0"	2000 lbs.
3	2'-5"			Double Purchase	55'-0"	14'-0"	2000 lbs.
4	2'-11"	1st Legs		Double Purchase	55'-0"	14'-0"	2000 lbs.
5	4'-3"	Electric 1		1/2 Travel, Race Way, Laddered @ 3'-6"	60'-0"	10'-0"	1500 lbs.
6	6'-0"			Double Purchase	55'-0"	14'-0"	2000 lbs.
7	6'-8"			Double Purchase	55'-0"	14'-0"	2000 lbs.
8	7'-4"	Projection Screen			55'-0"	7'-0"	1000 lbs.
9	8'-0"	DS Full Black			55'-0"	7'-0"	1000 lbs.
10	8'-6"	2nd Legs			55'-0"	7'-0"	1000 lbs.
11	9'-4"	Electric 2			60'-0"	10'-0"	1500 lbs.
12	9'-10"			To be Installed at a Later Date			
13	10'-10"				55'-0"	7'-0"	1000 lbs.
14	11'-6"				55'-0"	7'-0"	1000 lbs.
15	12'-0"				55'-0"	7'-0"	1000 lbs.
16	12'-6"	3rd Border			55'-0"	7'-0"	1000 lbs.
17	13'-0"	3rd Legs			55'-0"	7'-0"	1000 lbs.
18	13'-6"			To be Installed at a Later Date			
19	14'-0"	Electric 3			60'-0"	10'	1500 lbs.
20	15'-0"				55'-0"	10'-0"	1500 lbs.
21	15'-11"				55'-0"	7'-0"	1000 lbs.
22	16'-6"			To be Installed at a Later Date			
23	17'-0"				55'-0"	7'-0"	1000 lbs.
24	17'-6"	MS Full Black			55'-0"	7'-0"	1000 lbs.
25	18'-6"	4th Legs			55'-0"	7'-0"	1000 lbs.
26	19'-0"			To be Installed at a Later Date			
27	19'-6"	Electric 4			55'-0"	10'	1500 lbs.
28	20'-0"				55'-0"	7'-0"	1000 lbs.
29	20'-6"			To be Installed at a Later Date			
30	21'-0"				55'-0"	10'-0"	1500 lbs.
31	21'-6"				55'-0"	7'-0"	1000 lbs.
32	22'-0"			To be Installed at a Later Date			
33	22'-6"				55'-0"	7'-0"	1000 lbs.
34	24'-0"	5th Border			60'-0"	10'-0"	1500 lbs.
35	24'-0"	5th Legs			55'-0"	10'-0"	1000 lbs.
36	26'-0"	Electric 5		Raceway and Laddered @ 2'-0"	60'-0"	10'-0"	1500 lbs.
37	27'-0"			To be Installed at a Later Date			
38	27'-6"			To be Installed at a Later Date			
39	28'-0"	Electric 6			55'-0"	7'-0"	1000 lbs.
40	28'-5"	Scrim			55'-0"	7'-0"	1000 lbs.
41	29'-0"				55'-0"	7'-0"	1000 lbs.
42	29'-6"				55'-0"	7'-0"	1000 lbs.
43	30'-0"	US Full Black			55'-0"	7'-0"	1000 lbs.
44	30'-6"	Cyc			60'-0"	7'-0"	1000 lbs.

34'-4"

Back Wall



ground plan

Fullerton College Campus Theatre
01512000

9/5/2002
1/8" = 1'